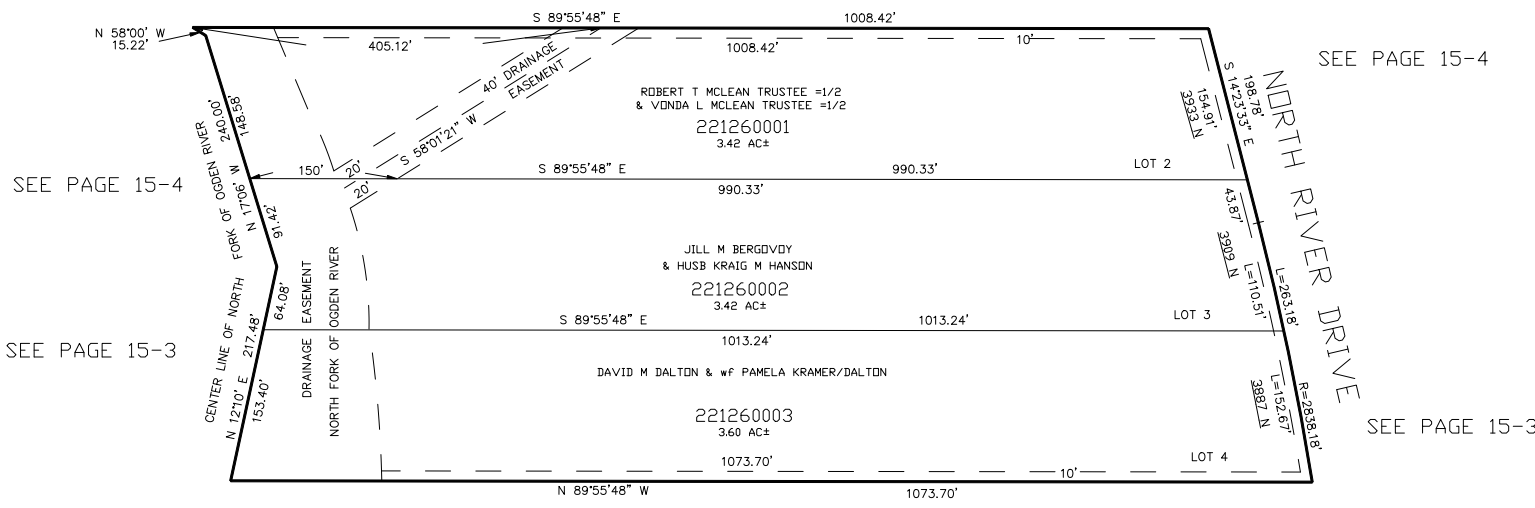


PART OF THE WEST 1/2 OF SEC. 21, T.7N., R.1E., S.L.B. & M.  
RIVER VALLEY DRIVE EST NO. 2

IN WEBER COUNTY  
SCALE 1" = 100'

TAXING UNIT: 36

SEE PAGE 15-4



SEE PAGE 15-3

10' UTILITY & DRAINAGE EASEMENTS EACH  
SIDE OF PROPERTY LINES AS INDICATED  
BY DASHED LINES EXCEPT AS OTHERWISE  
SHOWN.

FOR COMPLETE ENG DATA SEE  
ORIGINAL DEDICATION PLAT IN  
BOOK 41, PAGE 27 OF RECORDS.